

Manu t o r k[®]

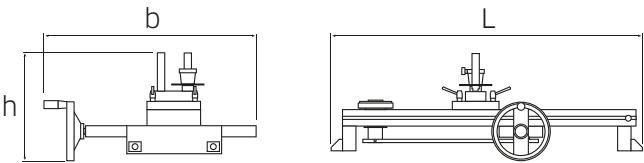
Mechanical loaders for torque wrenches and torque screwdrivers

Thanks to the modular design, end users can put together their own mechanical loader according to their specific requirements. Extensions with additional components are possible any time. All the components are carefully matched to ensure compatibility and can be easily fitted. This slot-in system is easy to use and has a very accurate fit. The components can be quickly and easily locked together using the integrated screw joints. The display unit can be attached at various points of the system via a holder. In this way, every user can organise his or her work to suit themselves.

7791 Mechanical loaders up to 400 N·m

Measurement possible without moving the point of application of force.

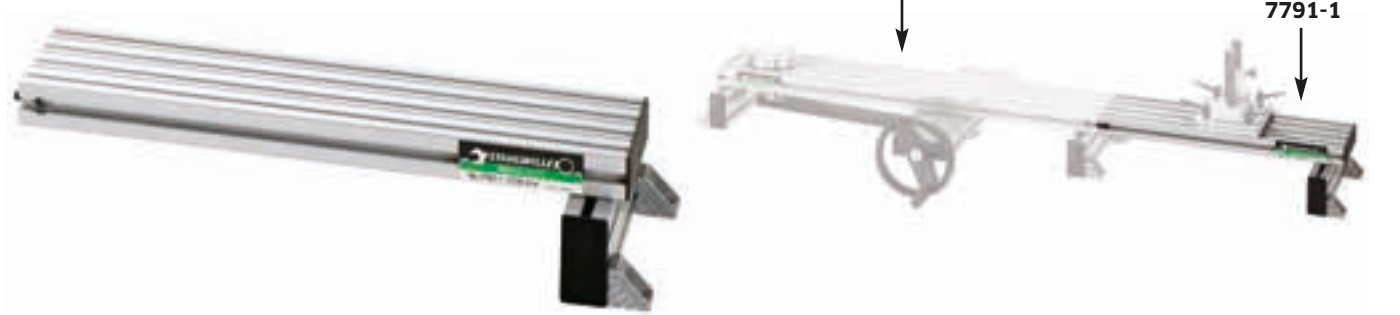
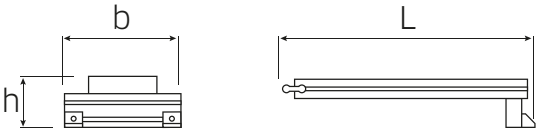
Thanks to a specially designed force transmission system, mechanical loader No 7791 avoids the risk of the point of force application shifting during the calibration process. The lever below the test rail is actuated in a linear direction by the handwheel acting on a spindle. The linear motion is translated into a rotary movement which acts on the transducer. The torque wrench to be calibrated remains in the same position throughout the calibration process. This prevents measuring errors caused by the point of force application being moved. Thanks to a low-friction linear ball bearing, the torque wrench is automatically levelled as it is placed in the unit. A further linear ball bearing ensures the contact with the torque wrench is friction-free. The reduction in lateral forces acting on the transducer and in the friction on the point of contact with the torque wrench results in a corresponding reduction in mismeasurement. Patents applied for.



Code	Capacity N·m	for transducer sizes 1-100	for torque wrenches with functional length (L _F) max. mm	Profile width mm	b mm	h mm	L mm	ΔΔ kg
52 11 0091	-400	sizes 1-100	815	180	704	323	1069	26.5

7791-1 Extension unit for No 7791, 7794-1 and 7794-2 up to 1000 N·m

with one pair of adapter plates No 7770-3 for height compensation between extension unit No 7791-1 and perfectControl calibrating units No 7794-1 and No 7794-2.



Code	Capacity N·m	for torque wrenches with functional length (L _F) max. mm	Profile width mm	b mm	h mm	L mm	ΔΔ kg
52 11 0191	-1000	1390 (7791 + 7791-1)	180	308	135	673	5.4